

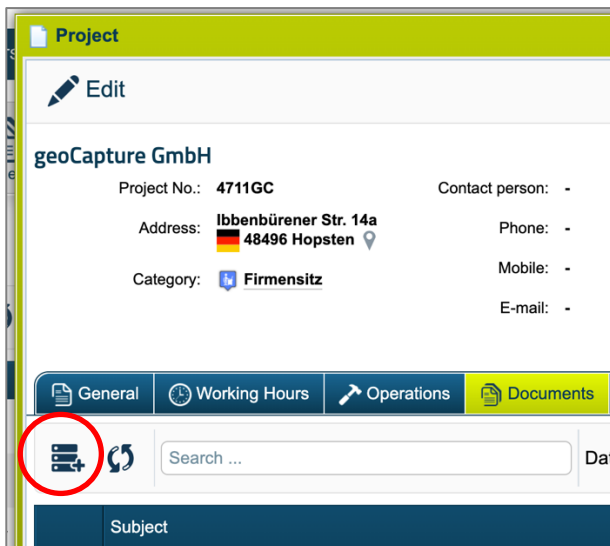
## Create a miamapo map in geoCapture

In geoCapture, you can create your own miamapo maps based on Google Maps. These maps will be directly associated with your projects.

If you are not yet registered for miamapo, geoCapture will automatically guide you through the registration process and start the free trial period.

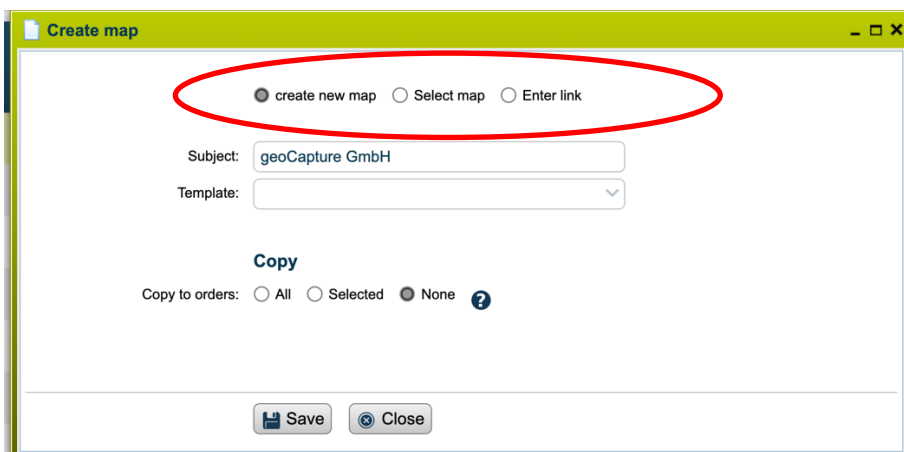
You can create miamapo maps directly within a project or task. To do this, go to the "Projects" section and open the project by double-clicking on it.

Select the "Documents" tab and add a new document.



Select the option "miamapo map."

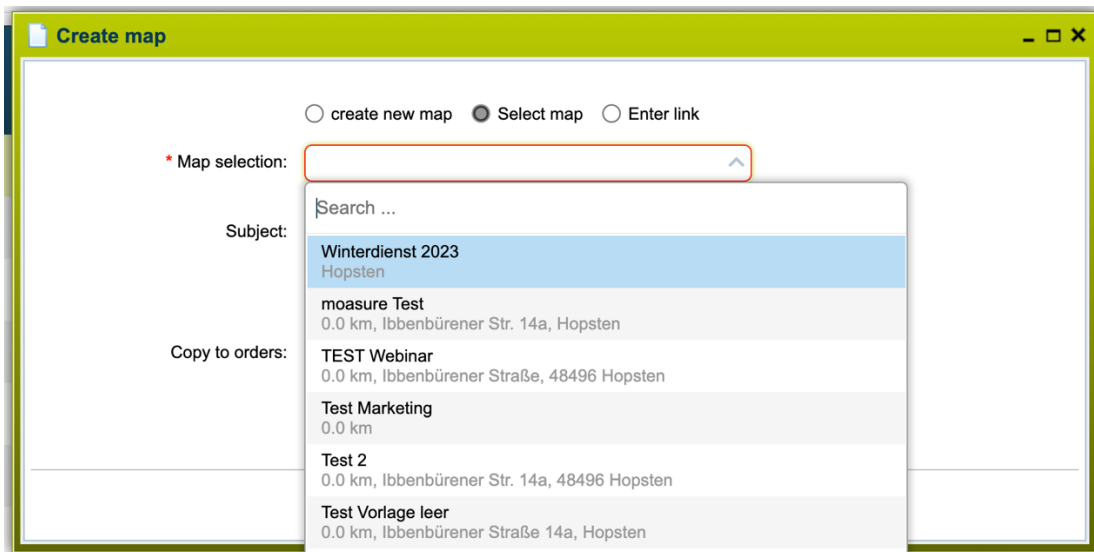
Here, you can choose whether you want to create a new map or add an existing map. Existing maps can be added through a dropdown list or a shareable link.



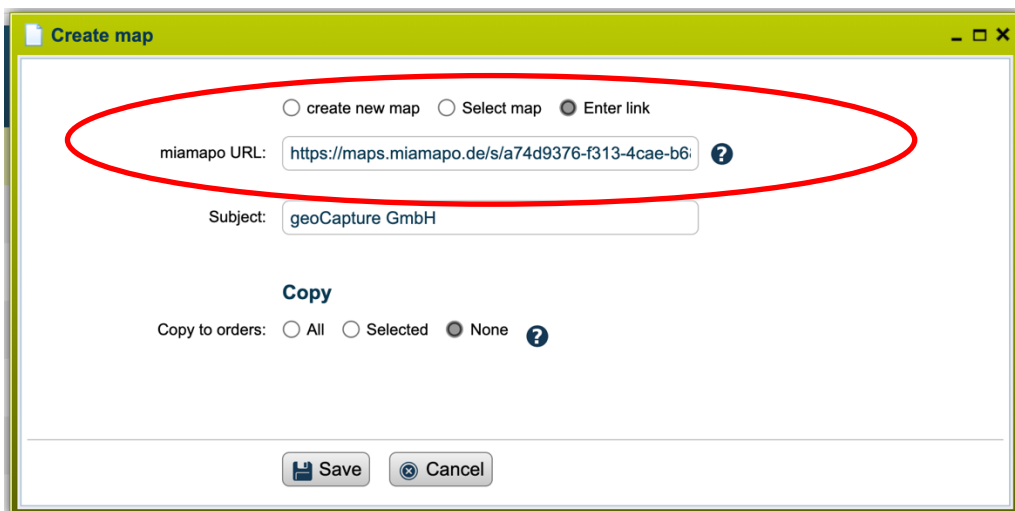
## Add existing map

If you want to add an existing miamapo map to your project, choose the option "Select Map" or "Enter Link."

Select the appropriate map from the dropdown menu.  
The map's title will be automatically taken over.



If you choose the option "Enter Link," you need to paste the sharing URL of your map into the corresponding field.

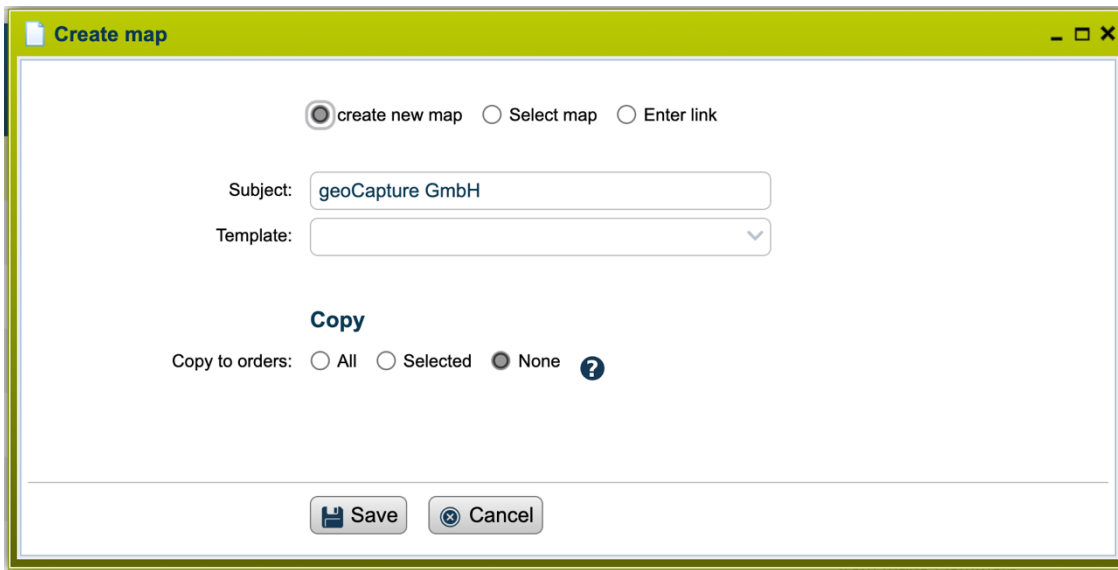


You can customize the subject as you like.

Save your information, and the map will be added to your project documents.

## Create a new map

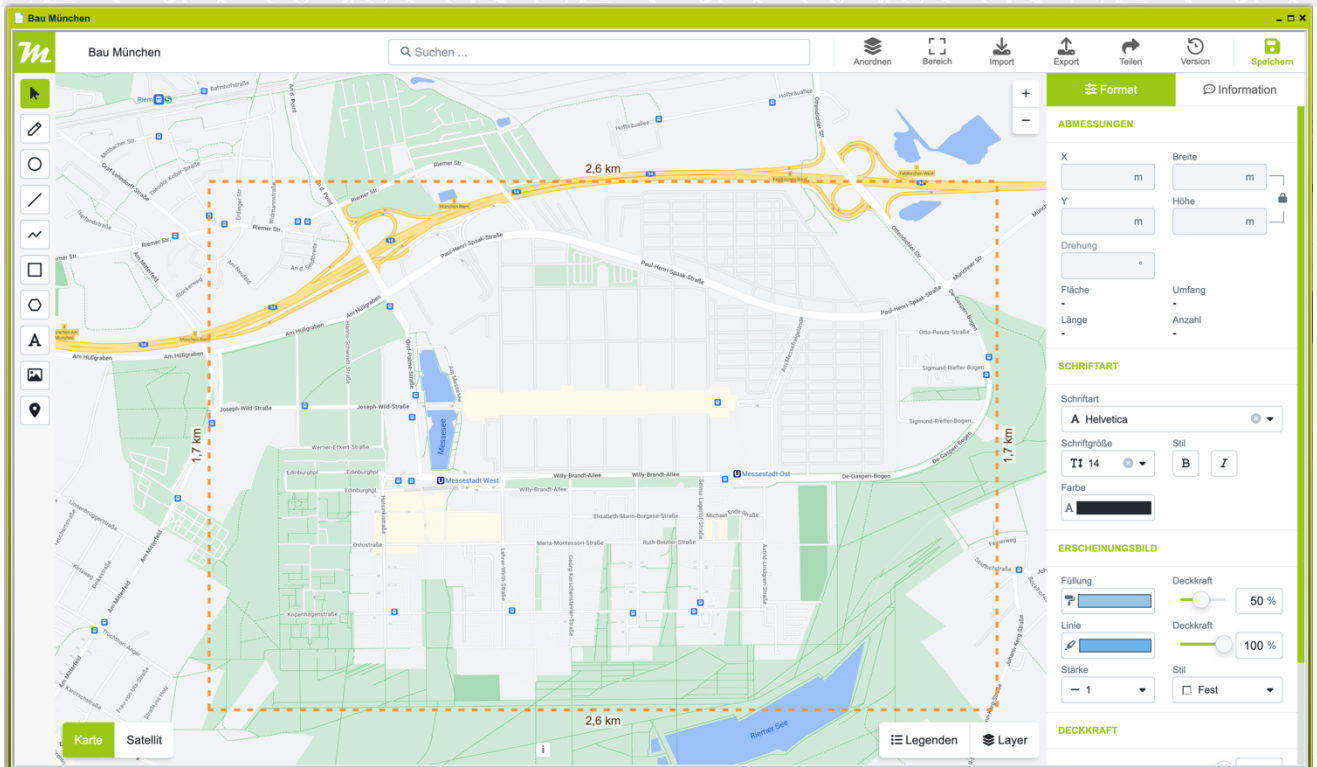
To create a new map, select "Create new map." You can optionally customize the subject and choose a template.



The screenshot shows a dialog box titled "Create map" with a green header bar. Inside the dialog, there are three radio buttons: "create new map" (which is selected), "Select map", and "Enter link". Below these, there is a text input field for "Subject" containing "geoCapture GmbH" and a dropdown menu for "Template". Under the heading "Copy", there are three radio buttons: "All", "Selected", and "None" (which is selected), followed by a question mark icon. At the bottom of the dialog, there are two buttons: "Save" and "Cancel".

Save your information, and the miamapo editor will be launched. It will be positioned directly on the project address, and a default area will be selected.

# Create a map in geoCapture



Once you have finished editing your map, save your changes and exit the editor.

In the file view of your project, you will now find your miamapo map.

You can return to the editor or map view by selecting the menu items "Edit" or "Display" respectively.

